

# BRIGAIID'S WORKFLOW

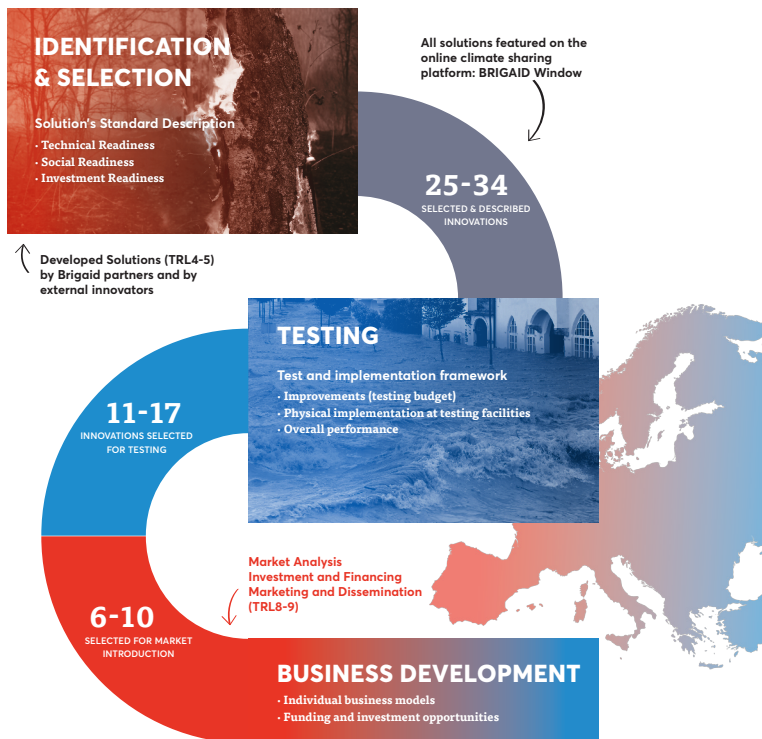
## INNOVATION CYCLE



## BRIGAIID'S PLANNED CYCLES

2016 > 2017 > 2018

## CYCLE'S PHASES



[www.brigaid.eu](http://www.brigaid.eu)

#brigaid #H2020 #EASME



This project has received funding from the European Union's Horizon 2020 research and innovation programme under grant agreement No 700699.



# BRIGAIID

BRIDGING THE GAP FOR INNOVATIONS  
IN DISASTER RESILIENCE

Do you have an innovation that  
has the potential to reduce risks  
from natural hazards?

Are you eager to improve your  
innovation, make it fit with  
needs of end users, and meet  
with prospective clients?

Contact us at:

[climate-innovation@brigaid.eu](mailto:climate-innovation@brigaid.eu)

# WE SUPPORT CLIMATE INNOVATORS

Get a glimpse of  
how we do it!

# BRIGAIID IS A 4-YEAR PROJECT UNDER EU HORIZON2020. (2016-2020)

We aim to effectively  
bridge the gap between  
innovators and end-  
users in resilience to  
floods, droughts and  
extreme weather.

## BRIGAIID OFFERS

State of the art knowledge of climate  
risk, science-based methods and funding  
opportunities to improve innovations by:

- ① Performing tests, evaluating results and making improvements.
- ② Incorporating needs of clients in the design and business model.
- ③ Putting innovations in the spotlight.

## BRIGAIID'S APPROACH

BRIGAIID clears the path to deliver  
innovations on floods, droughts and  
extreme weather to the market through  
the assessment and improvement of:

### Technical + Social + Market Readiness

By advancing these three factors simultaneously, BRIGAIID smoothens the development path, because technical, social and market requirements can be incorporated in the design, business model and market approach early on.



BRIGAIID identifies, selects, tests and  
improves innovations in subsequent  
innovation cycles, from prototype to  
market-ready product.

Throughout the three innovation cycles, the  
75-100 promising innovations on floods,  
droughts and extreme weather are assessed,  
of these, the 35-50 most promising ones  
are improved, from which the top 20-30  
innovations with the highest socio-technical  
and investment readiness are supported to  
access the market.

